

SSE SISTER SEMICONDUCTOR EQUIPMENT GMBH

Josef-Schuetzler-Str. 2
 D-78224 Singen
 Tel: (+49) 7731 189-0
 Fax: (+49) 7731 189-100

Customer :
 Plant designation: OPTIWET ST60
 Drawing number : 77004
 Commission : KA0911

Manufacturer (Firm) : SSE SISTER SEMICON.
 EQUIPMENT GMBH

Path eplan4\p\.. :
 Project name :
 Make :
 Type :
 Mounting site :
 Responsible for project : RS
 Part feature :

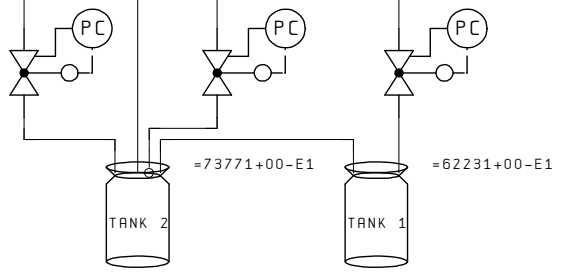
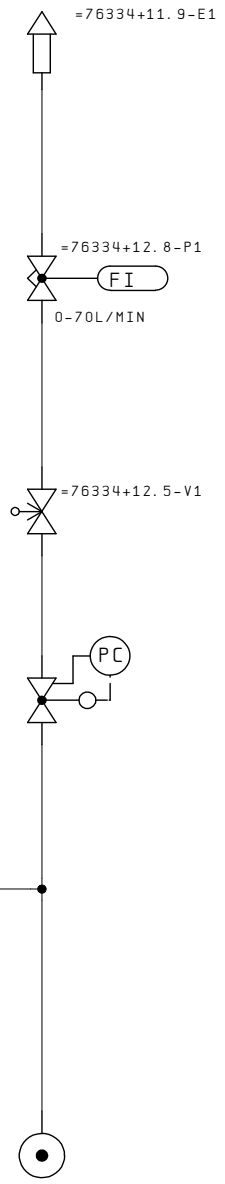
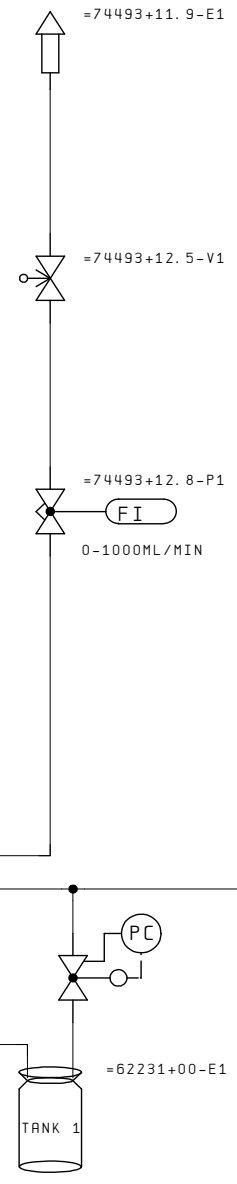
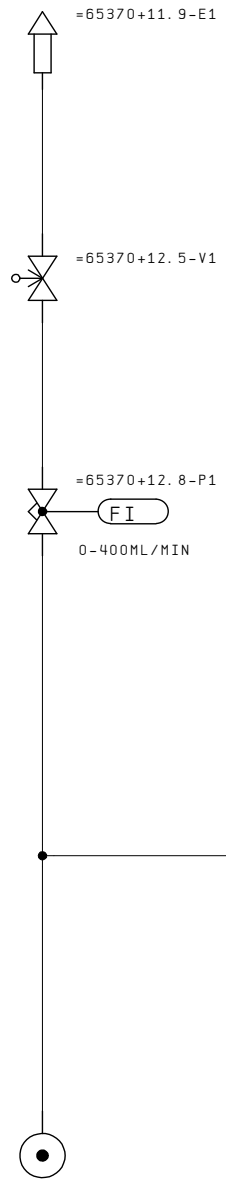
Created the : 04. Dez. 2008 Highest page nbr.: 2
 Changed on the: 04. Dez. 2008 from (abr.): Number of pages : 56

CHANGES	DATE	NAME	FORM.	EPLAN 4.10 : 14.09.93	ORIG.	EST. WITH	EST. BY					
			DATE		KA0911		SSE SISTER SEMICON.	TITLE SHEET		77004	=INFO	
			NAME	RS			EQUIPMENT GMBH				+	
			PLOT	07. Apr. 2009	OPTIWET ST60							SH. 1
			FORM.									2 SHS

BACK SIDE RINSE
DI-WATER

SPRAY NOZZLE
DI-WATER

PUDDLE NOZZLE
N2



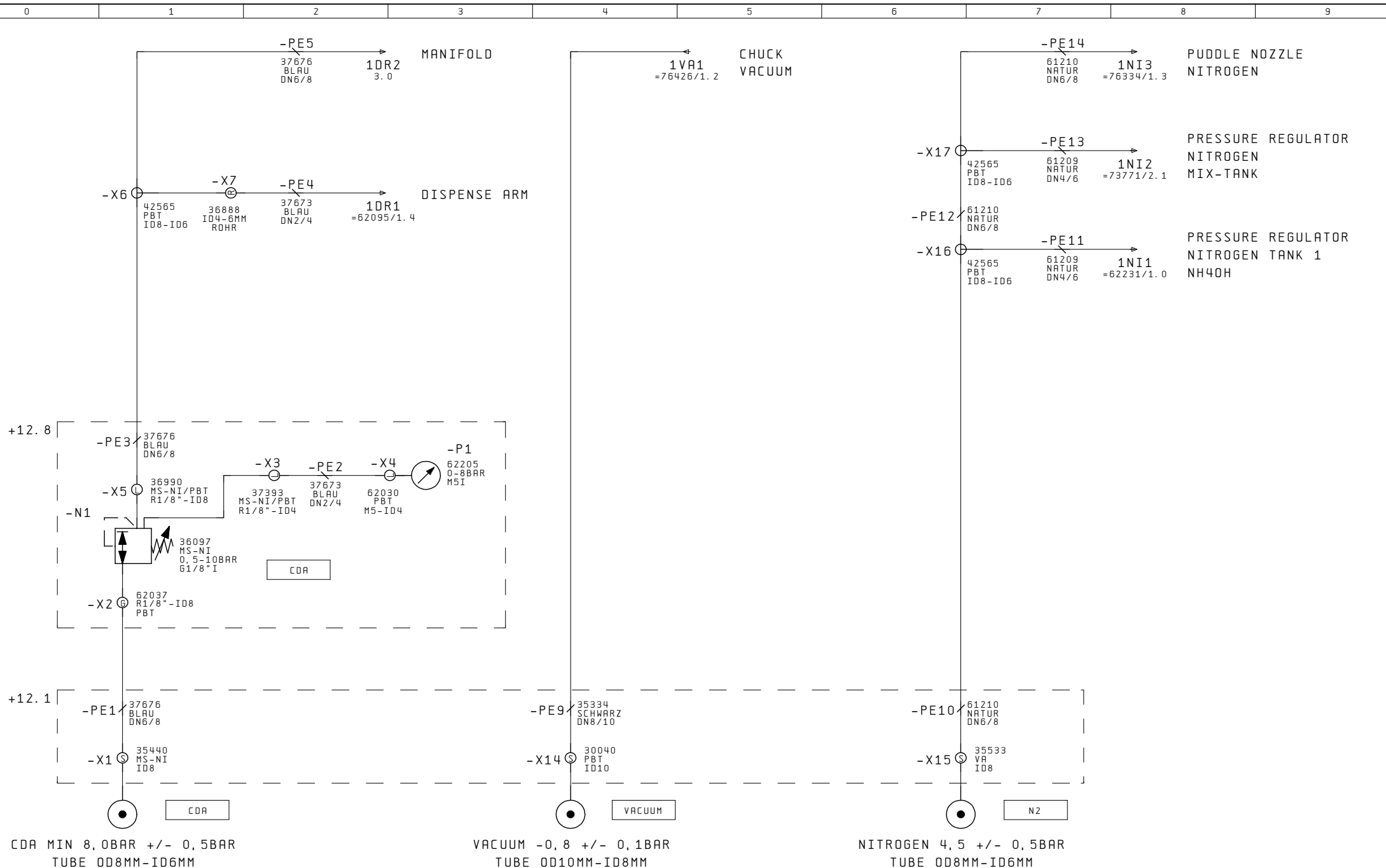
DI-WATER
CONNECTING

TANK 2 MIXING VESSEL
NH4OH/DI-WATER

TANK 1 NH4OH
10L SS TANK

NITROGEN

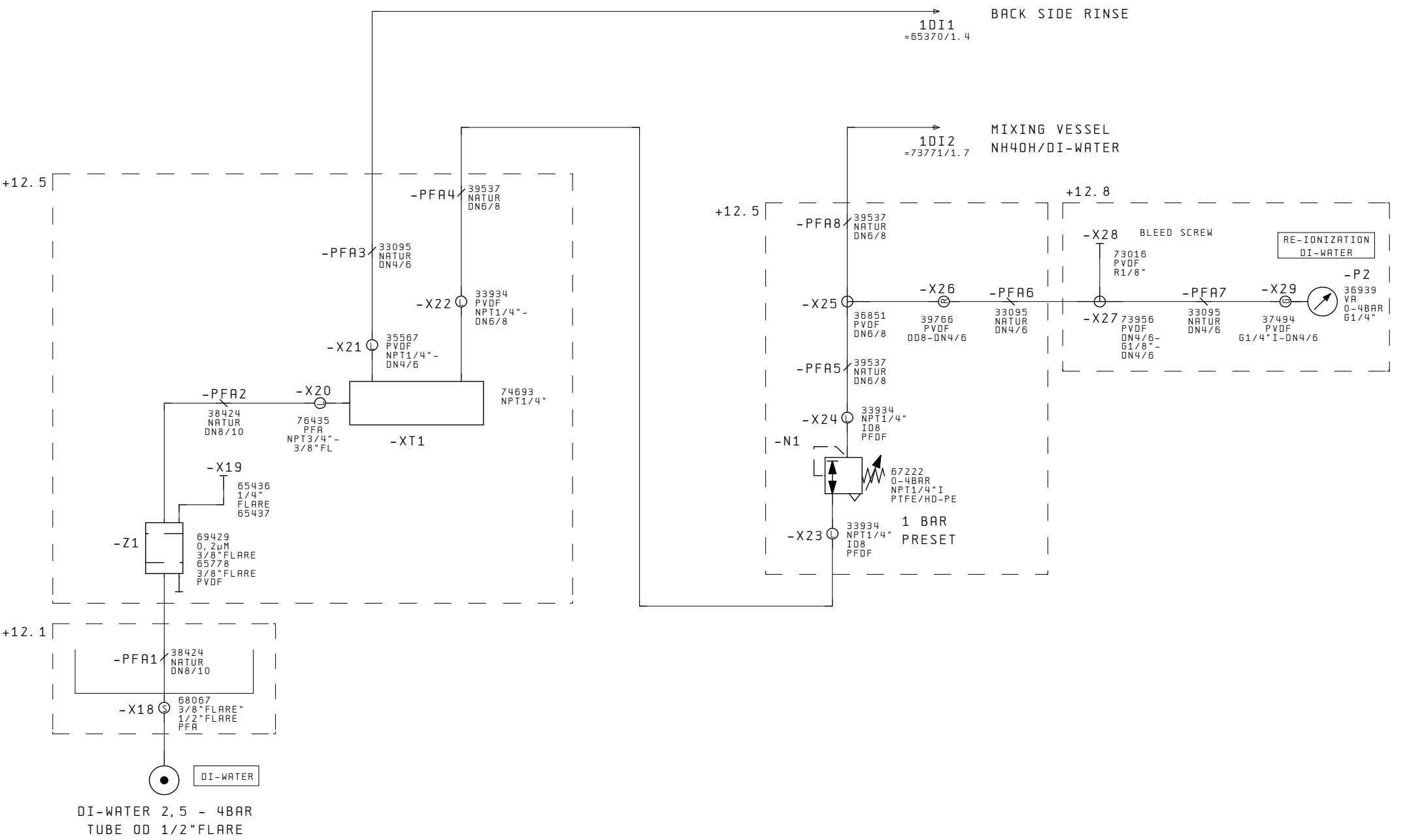
1		DATE		KA0911		SSE SISTER SEMICON. OVERVIEW NOZZLES		77004		=INFO	
		NAME		RS		EQUIPMENT GMBH				+	
		PLOT		07. Apr. 2009						SH. 2	
CHANGES	DATE	NAME	FORM.	EPLAN 4.10 : 14.09.93	ORIG.	EST. WITH	EST. BY			2 SHS	



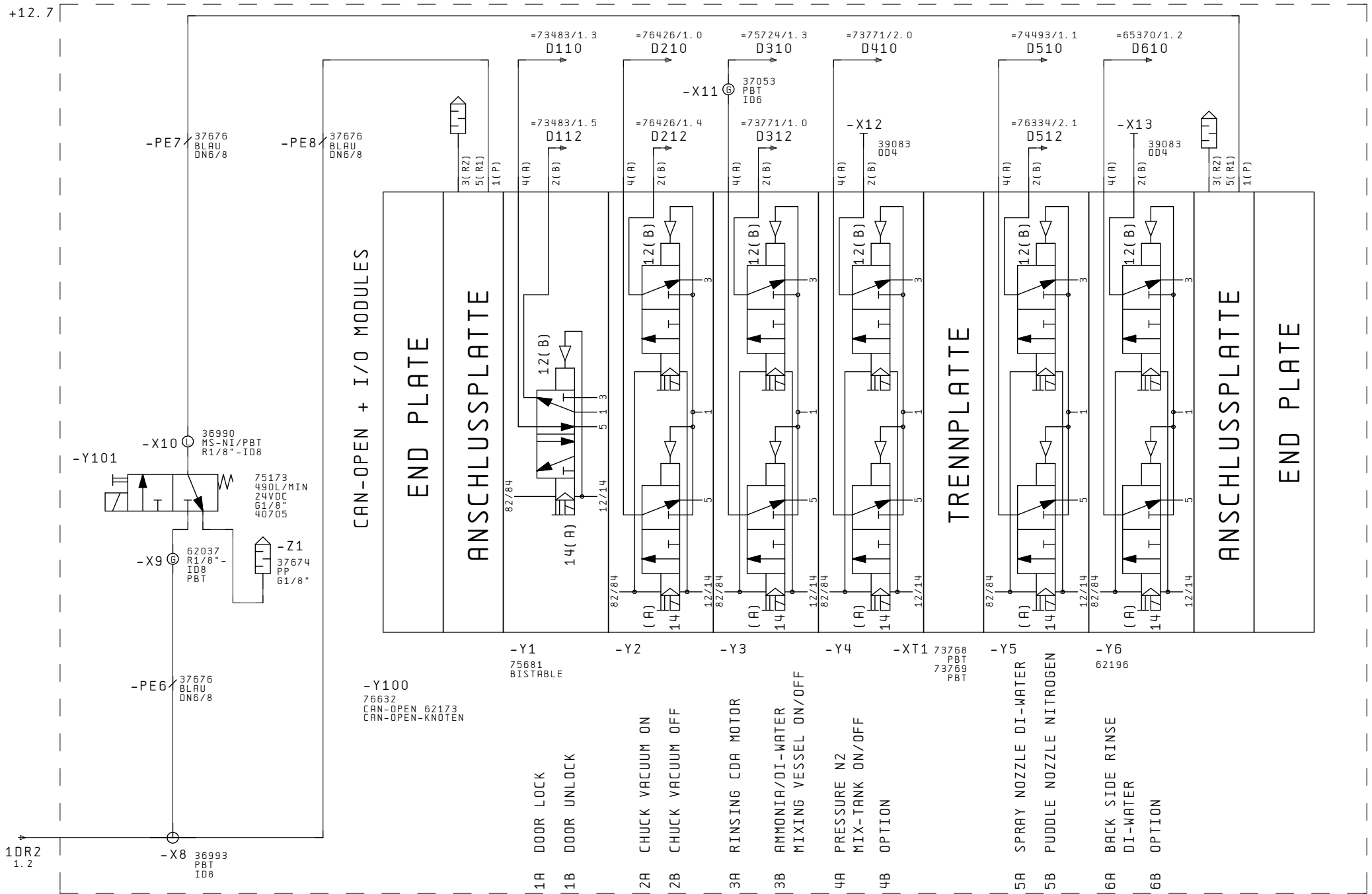
=INFO/2

2

DATE	KA0911	SSE SISTER SEMICON.	SUPPLY	77004	=6A						
NAME	RS	EQUIPMENT GMBH	CDA, VACUUM,		+12						
PLDT	07. Apr. 2009	OPTIWET ST60	NITROGEN		SH. 1						
CHANGES	DATE	NAME	FORM.	EPLAN 4.10 : 14.09.93	ORIG.	EST. WITH	EST. BY				4 SH



DATE		KA0911		SSE SISTER SEMICON. EQUIPMENT GMBH		SUPPLY DI-WATER		77004		=6A	
NAME		RS		OPTIWET ST60						+12	
PLOT		07. Apr. 2009								SH. 2	
CHANGES	DATE	NAME	FORM.	EPLAN 4.10 : 14.09.93	ORIG.	EST. WITH	EST. BY			4 SH	



DATE		KA0911		SSE SISTER SEMICON. MANIFOLD		77004		=6A	
NAME		RS		EQUIPMENT GMBH				+12	
PLOT		07. Apr. 2009		OPTIWET ST60				SH. 3	
CHANGES	DATE	NAME	FORM.	EPLAN 4.10 : 14.09.93	ORIG.	EST. WITH	EST. BY	4 SH	

BILL OF MATERIALS

AMOUNT	ARTICLE NR-NO.	DESIGNATION		DEVICE DESIGNATION		POSITION
				PLANT / LOCATION / ID	SCHEMATICS / POSITION	
1	33095	PFA-TUBE ID4MM-OD6MM	PFA-TRANSPARENT	=GA+12.5-PFA3	=GA+12/2.2	19
1	33095	PFA-TUBE ID4MM-OD6MM	PFA-TRANSPARENT	=GA+12.5-PFA6	=GA+12/2.6	20
1	33934	L-SCREW CONNECTION NPT1/4"-DN6/8	PVDF	=GA+12.5-X22	=GA+12/2.3	21
1	33934	L-SCREW CONNECTION NPT1/4"-DN6/8	PVDF	=GA+12.5-X23	=GA+12/2.5	22
1	33934	L-SCREW CONNECTION NPT1/4"-DN6/8	PVDF	=GA+12.5-X24	=GA+12/2.5	23
1	35567	L-SCREW CONNECTION NPT1/4"-DN4/6	PVDF	=GA+12.5-X21	=GA+12/2.2	24
1	36851	T-SCREW CONNECTION DN6/8	PVDF	=GA+12.5-X25	=GA+12/2.5	25
1	38424	PFA-TUBE ID8MM-OD10MM	PFA-TRANSPARENT	=GA+12.5-PFA2	=GA+12/2.1	26
1	39537	PFA-TUBE ID6MM-OD8MM	PFA-TRANSPARENT	=GA+12.5-PFA4	=GA+12/2.3	27
1	39537	PFA-TUBE ID6MM-OD8MM	PFA-TRANSPARENT	=GA+12.5-PFA8	=GA+12/2.5	28
1	39537	PFA-TUBE ID6MM-OD8MM	PFA-TRANSPARENT	=GA+12.5-PFA5	=GA+12/2.5	29
1	39766	G-REDUCTION OD8-DN4/6	PVDF	=GA+12.5-X26	=GA+12/2.6	30
1	65436	UNION NUT 1/4" FLARE	PFA	=GA+12.5-X19	=GA+12/2.1	31
1	65437	PLUG CLOSE UNION NUT 1/4" FLARE	PFA	=GA+12.5-X19	=GA+12/2.1	32
2	65778	UNION NUT 3/8"FLARE	PVDF	=GA+12.5-Z1	=GA+12/2.1	33
1	67222	PRESSURE REGULATOR F. LIQUIDS 0-4BAR NPT1/4" I	PTFE/HD-PE	=GA+12.5-N1	=GA+12/2.5	34
1	69429	DISPOSABLE FILTER 0,2µm 3/8"FLARE	UPE/PFA	=GA+12.5-Z1	=GA+12/2.1	35
1	74693	WEDLOCK 2X NPT1/4"	PP-TRANSPARENT	=GA+12.5-XT1	=GA+12/2.2	36
1	76435	L-SCREW CONNECTION NPT3/4"-3/8"FLARE	PFA	=GA+12.5-X20	=GA+12/2.2	37

+12.1/1

+12.7/1

DATE		07. Apr. 2009		KA0911		SSE SISTER SEMICON. BILL OF MATERIALS		77004		=GA	
NAME		RS		OPTIWET ST60		EQUIPMENT GMBH				+12.5	
PLOT		07. Apr. 2009								SH. 1	
CHANGES	DATE	NAME	FORM.	EPLAN 4.10 : 14.09.93	ORIG.	EST. WITH	EST. BY			1 SH	

BILL OF MATERIALS

AMOUNT	ARTICLE NR-NO.	DESIGNATION	DEVICE DESIGNATION		POSITION
			PLANT / LOCATION / ID	SCHEMATICS / POSITION	
1	36990	L-PLUG-SCREW CONNECTION R1/8"-ID8 MS-NI/PBT	=GA+12.7-X10	=GA+12/3.1	38
1	36993	T-PUSH-IN CONNECTOR ID8 PBT	=GA+12.7-X8	=GA+12/3.1	39
1	37053	EXCHANGE FITTING ID6 CLOSE MANIFOLD VQ1000 PBT	=GA+12.7-X11	=GA+12/3.5	40
1	37674	BAFFLE G1/8" SINTER PLASTIC	=GA+12.7-Z1	=GA+12/3.2	41
1	37676	PE-TUBE ID6MM-OD8MM PE-BLUE	=GA+12.7-PE6	=GA+12/3.1	42
1	37676	PE-TUBE ID6MM-OD8MM PE-BLUE	=GA+12.7-PE7	=GA+12/3.1	43
1	37676	PE-TUBE ID6MM-OD8MM PE-BLUE	=GA+12.7-PE8	=GA+12/3.2	44
1	39083	SEALING PLUG OD4 PBT	=GA+12.7-X12	=GA+12/3.6	45
1	39083	SEALING PLUG OD4 PBT	=GA+12.7-X13	=GA+12/3.7	46
1	40705	SOCKET WITH CABLE FOR VALVE #40704	=GA+12.7-Y101	=GA+12/3.1	47
1	62037	G-PLUG-SCREW CONNECTION R1/8"-ID8 PBT	=GA+12.7-X9	=GA+12/3.1	48
1	62173	CAN-OPEN UNIT CLOSE MANIFOLD SV 1000	=GA+12.7-Y100	=GA+12/3.2	49
1	62192	CONNECTING PLATE CLOSE 62172	=GA+12.7-Y6	=GA+12/3.7	50
1	62196	3/2-DIRECTIONAL CONTROL VALVE DOUBLE CLOSE 62172	=GA+12.7-Y6	=GA+12/3.7	51
1	73768	P-SEPARATION PBT	=GA+12.7-XT1	=GA+12/3.6	52
1	73769	R-SEPARATION PBT	=GA+12.7-XT1	=GA+12/3.6	53
1	75173	3/2-DIRECTIONAL CONTROL VALVE NC 24VDC 490L/MIN G1/8"	=GA+12.7-Y101	=GA+12/3.1	54
1	75681	5/2-DIRECTIONAL CONTROL VALVE BISTABLE ID 4MM SV1000	=GA+12.7-Y1	=GA+12/3.3	55
1	76632	MANIFOLD CAN-OPEN 32 I/O 5 Valves	=GA+12.7-Y100	=GA+12/3.2	56

+12.5/1

+12.8/1

DATE		07. Apr. 2009		KA0911		SSE SISTER SEMICON. BILL OF MATERIALS		77004		=GA	
NAME		RS		OPTIWET ST60		EQUIPMENT GMBH				+12.7	
PLOT		07. Apr. 2009								SH. 1	
CHANGES	DATE	NAME	FORM.	EPLAN 4.10 : 14.09.93	ORIG.	EST. WITH	EST. BY			1 SH	

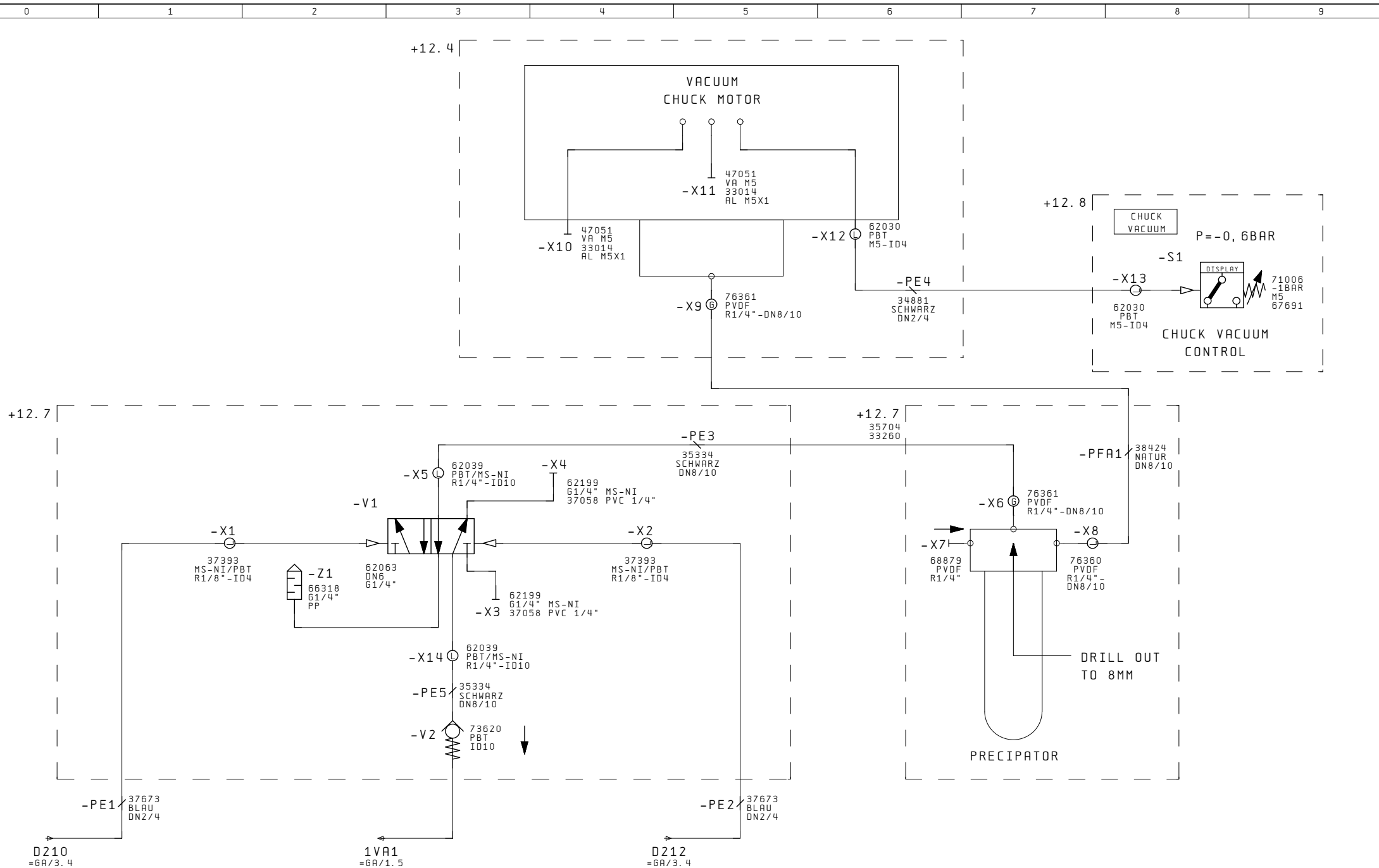
BILL OF MATERIALS

AMOUNT	ARTICLE NR-NO.	DESIGNATION	DEVICE DESIGNATION		POSITION
			PLANT / LOCATION / ID	SCHEMATICS / POSITION	
1	33095	PFA-TUBE ID4MM-OD6MM PFA-TRANSPARENT	=GA+12.8-PFA7	=GA+12/2.8	57
1	36097	PRESSURE REGULATOR 0,5-10BAR G1/8" I MS-NI	=GA+12.8-N1	=GA+12/1.1	58
1	36939	PRESSURE GAUGE 0-4BAR G1/4" SS	=GA+12.8-P2	=GA+12/2.8	59
1	36990	L-PLUG-SCREW CONNECTION R1/8"-ID8 MS-NI/PBT	=GA+12.8-X5	=GA+12/1.1	60
1	37393	L-PLUG-SCREW CONNECTION R1/8"-ID4 MS-NI/PBT	=GA+12.8-X3	=GA+12/1.2	61
1	37494	G-SCREW-ON FITTING. G1/4" I-DN4/6 PVDF	=GA+12.8-X29	=GA+12/2.8	62
1	37673	PE-TUBE ID2MM-OD4MM PE-BLUE	=GA+12.8-PE2	=GA+12/1.2	63
1	37676	PE-TUBE ID6MM-OD8MM PE-BLUE	=GA+12.8-PE3	=GA+12/1.1	64
1	62030	L-PLUG-SCREW CONNECTION M5-ID4 PBT	=GA+12.8-X4	=GA+12/1.2	65
1	62037	G-PLUG-SCREW CONNECTION R1/8"-ID8 PBT	=GA+12.8-X2	=GA+12/1.1	66
1	62205	PRESSURE GAUGE 0-8BAR M5I	=GA+12.8-P1	=GA+12/1.3	67
1	73016	SEALING PLUG R1/8" PVDF	=GA+12.8-X28	=GA+12/2.7	68
1	73956	T-SCREW CONNECTION DN4/6-G1/8"-DN4/6 PVDF	=GA+12.8-X27	=GA+12/2.7	69

+12.7/1

=73483+12/1

		DATE	07. Apr. 2009	KA0911		SSE SISTER SEMICON. BILL OF MATERIALS		77004		=GA
		NAME	RS	OPTIWET ST60		EQUIPMENT GMBH				+12.8
		PLDT	07. Apr. 2009							SH. 1
CHANGES	DATE	NAME	FORM.	EPLAN 4.10 : 14.09.93	ORIG.	EST. WITH	EST. BY			1 SHS



=73483/2

2

DATE		KA0911		SSE SISTER SEMICON. CHUCK VACUUM		77004		=76426	
NAME		RS		EQUIPMENT GMBH				+12	
PLOT		07. Apr. 2009		OPTIWET ST60				SH. 1	
CHANGES	DATE	NAME	FORM.	EPLAN 4.10 :14.09.93	ORIG.	EST. WITH	EST. BY	2 SH.	

BILL OF MATERIALS

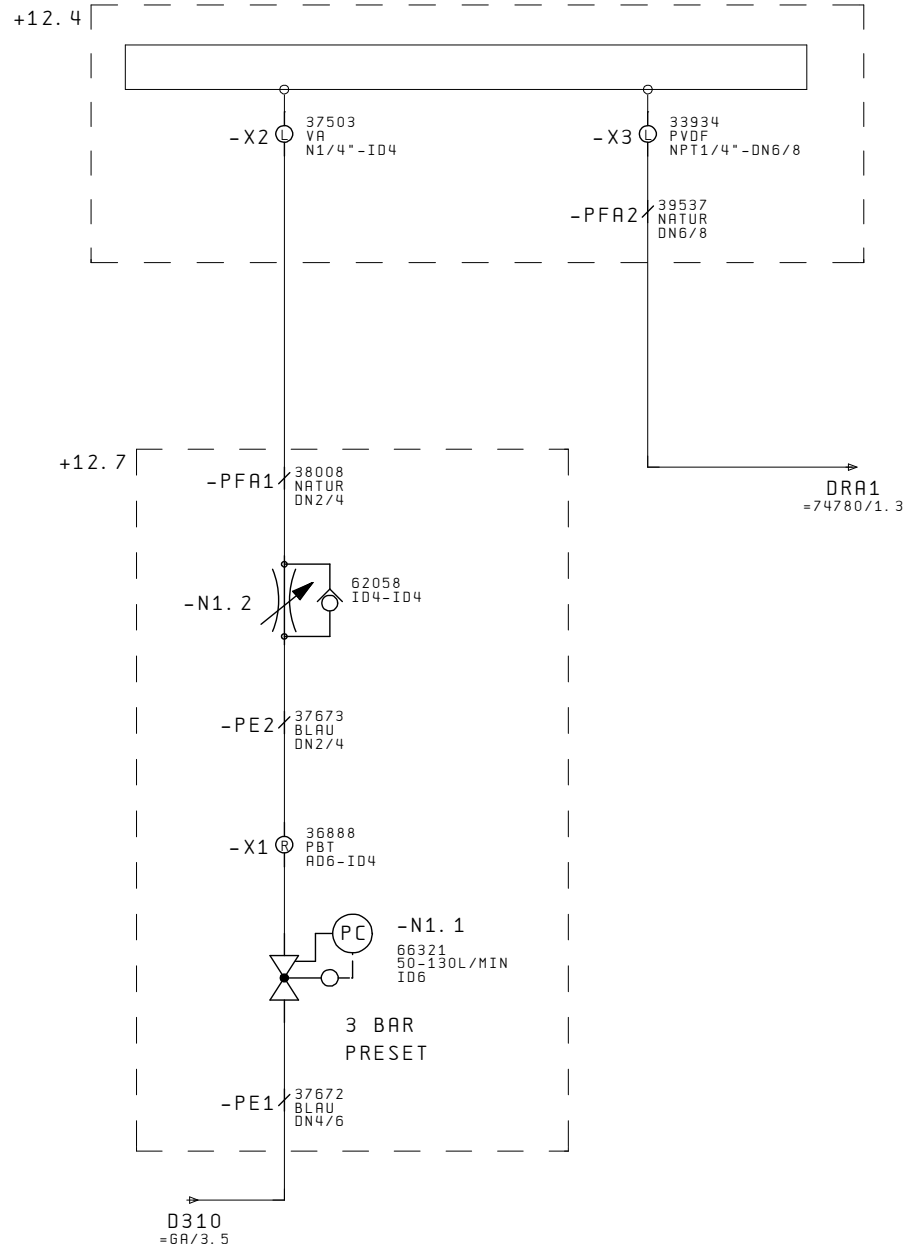
AMOUNT	ARTICLE NR-NO.	DESIGNATION	DEVICE DESIGNATION		POSITION
			PLANT / LOCATION / ID	SCHEMATICS / POSITION	
1	33260	FILTER GLAS TYP F-120G	=76426+12.7	=76426+12/1.6	290
1	35334	PE-TUBE ID8MM-OD10MM PE-BLACK	=76426+12.7-PE5	=76426+12/1.3	291
1	35334	PE-TUBE ID8MM-OD10MM PE-BLACK	=76426+12.7-PE3	=76426+12/1.5	292
1	35704	FILTER HEAD TYP FP INCL. ELBOW + O-RING	=76426+12.7	=76426+12/1.6	293
1	37058	O-RING FOR THREAD 1/4" PVC	=76426+12.7-X3	=76426+12/1.3	294
1	37058	O-RING FOR THREAD 1/4" PVC	=76426+12.7-X4	=76426+12/1.4	295
1	37393	L-PLUG-SCREW CONNECTION R1/8"-ID4 MS-NI/PBT	=76426+12.7-X1	=76426+12/1.1	296
1	37393	L-PLUG-SCREW CONNECTION R1/8"-ID4 MS-NI/PBT	=76426+12.7-X2	=76426+12/1.4	297
1	38424	PFA-TUBE ID8MM-OD10MM PFA-TRANSPARENT	=76426+12.7-PFA1	=76426+12/1.8	298
1	62039	L-PLUG-SCREW CONNECTION R1/4"-ID10 PBT	=76426+12.7-X5	=76426+12/1.3	299
1	62039	L-PLUG-SCREW CONNECTION R1/4"-ID10 PBT	=76426+12.7-X14	=76426+12/1.3	300
1	62063	5/2-WAY-IMPULSE VALVE PNEU. DN6 G1/4I	=76426+12.7-V1	=76426+12/1.2	301
1	62199	SEALING PLUG G1/4" MS-NI	=76426+12.7-X3	=76426+12/1.3	302
1	62199	SEALING PLUG G1/4" MS-NI	=76426+12.7-X4	=76426+12/1.4	303
1	66318	BAFFLE G1/4" PP	=76426+12.7-Z1	=76426+12/1.2	304
1	68879	SEALING PLUG R1/4" PVDF	=76426+12.7-X7	=76426+12/1.6	305
1	73620	NON-RETURN VALVE PUSH-IN ID10 PBT	=76426+12.7-V2	=76426+12/1.3	306
1	76360	L-SCREW CONNECTION R1/4"-DN8/10 PVDF	=76426+12.7-X8	=76426+12/1.7	307
1	76361	G-SCREW CONNECTION R1/4"-DN8/10 PVDF	=76426+12.7-X6	=76426+12/1.7	308

+12.4/1

+12.8/1

DATE		07. Apr. 2009		KA0911		SSE SISTER SEMICON. BILL OF MATERIALS		77004		=76426	
NAME		RS		OPTIWET ST60		EQUIPMENT GMBH				+12.7	
PLOT		07. Apr. 2009								SH. 1	
CHANGES	DATE	NAME	FORM.	EPLAN 4.10 : 14.09.93	ORIG.	EST. WITH	EST. BY			1 SH	

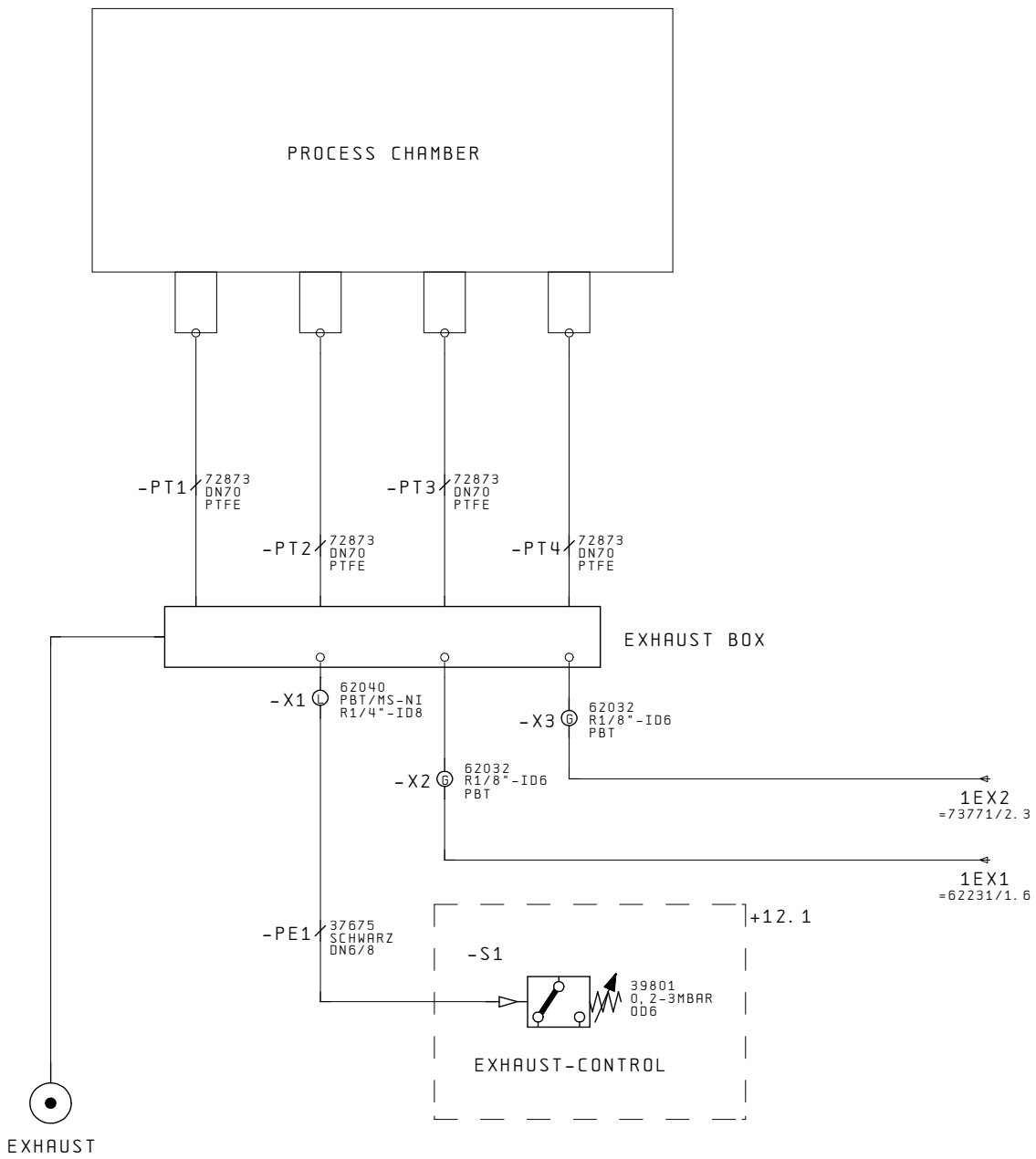
RINSING CDA
MOTOR



=76426+12. 8/1

+12. 4/1

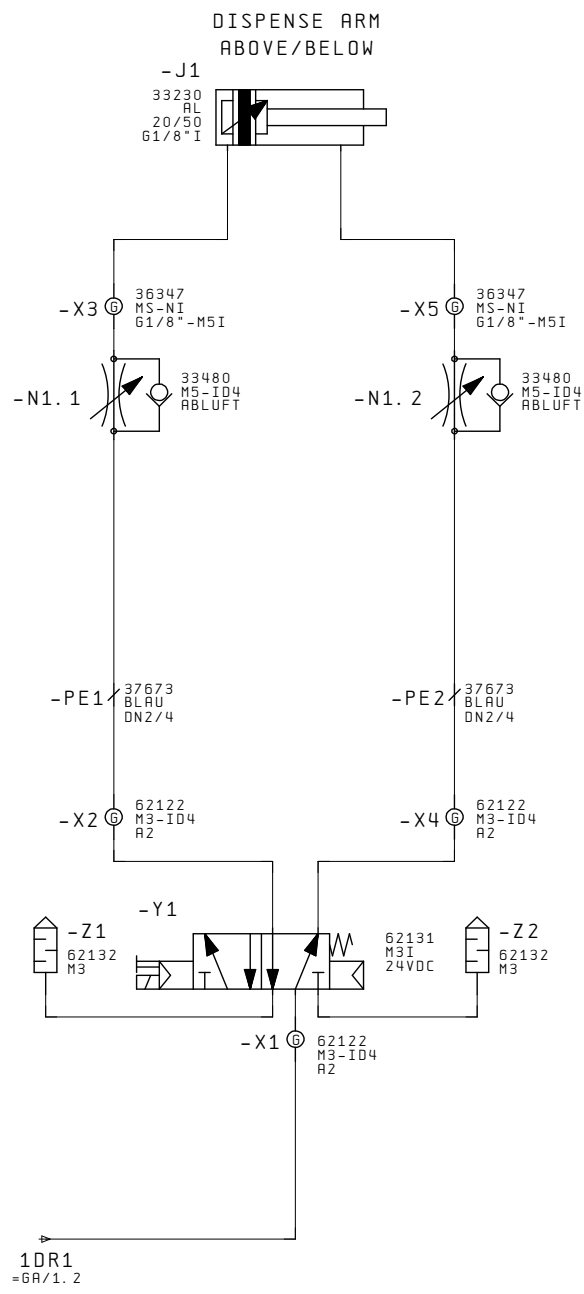
		DATE	KA0911		SSE SISTER SEMICON. RINSING CDA MOTOR		77004		=75724	
		NAME	RS		EQUIPMENT GMBH				+12	
		PLOT	07. Apr. 2009						SH. 1	
CHANGES	DATE	NAME	FORM.	EPLAN 4.10 : 14.09.93	ORIG.	EST. WITH	EST. BY			1 SHS



=75724+12.7/1

2

DATE		KA0911		SSE SISTER SEMICON. EQUIPMENT GMBH		EXHAUST		77004		=62113	
NAME		RS		OPTIWET ST60						+12	
PLOT		07. Apr. 2009								SH. 1	
CHANGES	DATE	NAME	FORM.	EPLAN 4.10 : 14.09.93	ORIG.	EST. WITH	EST. BY			2 SHS	



=OPT/1

2

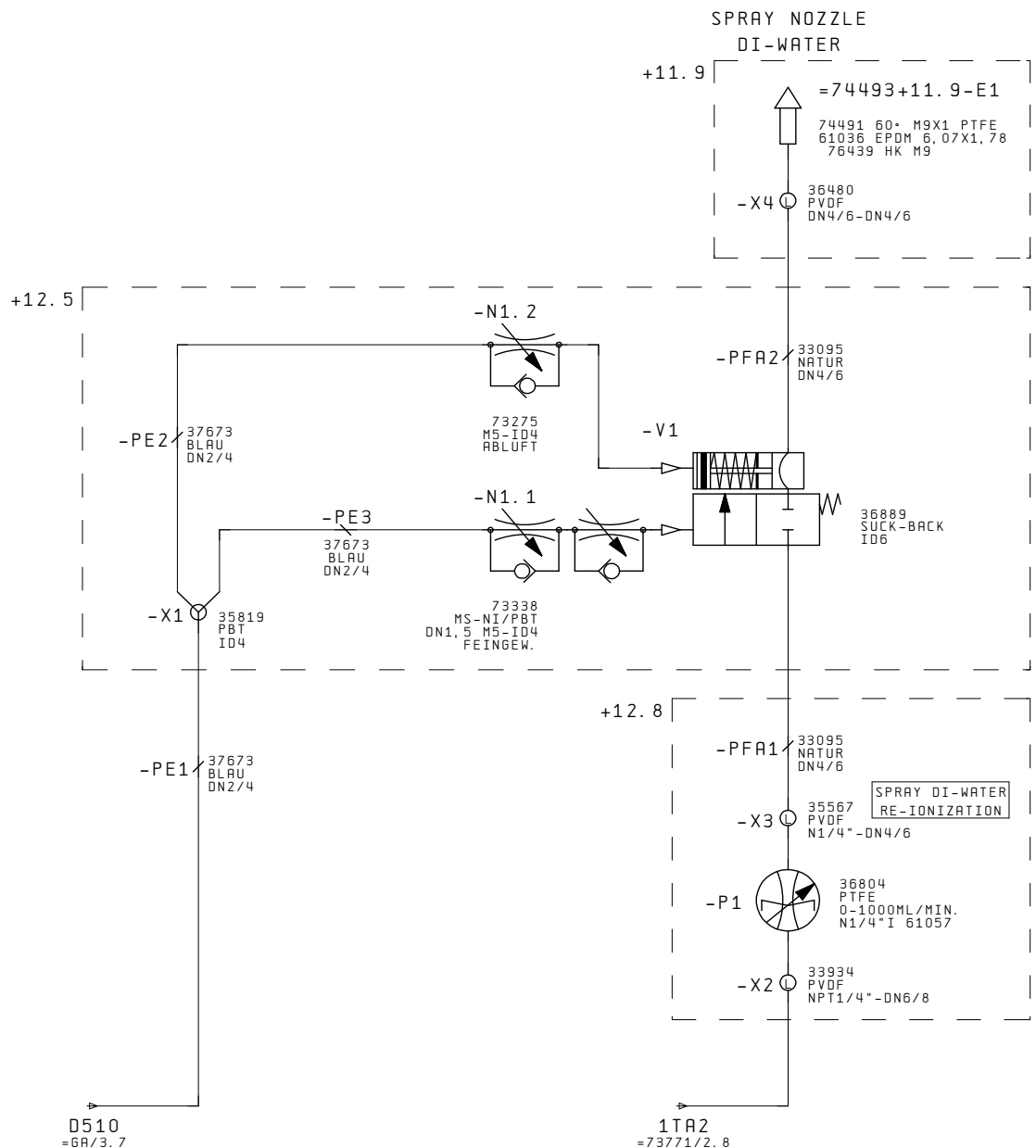
DATE		KA0911		SSE SISTER SEMICON. DISPENSE ARM LIFT		77004		=62095	
NAME		RS		EQUIPMENT GMBH				+12	
PLOT		07. Apr. 2009		OPTIWET ST60				SH. 1	
CHANGES	DATE	NAME	FORM.	EPLAN 4.10 : 14.09.93	ORIG.	EST. WITH	EST. BY	2 SHS	

BILL OF MATERIALS

AMOUNT	ARTICLE NR-NO.	DESIGNATION	DEVICE DESIGNATION		POSITION
			PLANT / LOCATION / ID	SCHEMATICS / POSITION	
1	33230	CYLINDER DOUBLE. OPERATING. D=20, H=050, G1/8" I AL	=62095+12-J1	=62095+12/1.4	70
2	33231	PROXIMITY SENSOR 24VDC M. LED CLOSE 33230	=62095+12-J1	=62095+12/1.4	71
1	33480	THROTTLE CHECK VALVE. VALVE EXTRACT AIR M5 ID4 MS-NI/PBT	=62095+12-N1.1	=62095+12/1.4	72
1	33480	THROTTLE CHECK VALVE. VALVE EXTRACT AIR M5 ID4 MS-NI/PBT	=62095+12-N1.2	=62095+12/1.5	73
1	36347	G-REDUCTION G1/8"-M5I MS-NI	=62095+12-X3	=62095+12/1.4	74
1	36347	G-REDUCTION G1/8"-M5I MS-NI	=62095+12-X5	=62095+12/1.5	75
1	37061	O-RING FOR THREAD 1/8" VA/NBR	=62095+12-X3	=62095+12/1.4	76
1	37061	O-RING FOR THREAD 1/8" VA/NBR	=62095+12-X5	=62095+12/1.5	77
1	37673	PE-TUBE ID2MM-0D4MM PE-BLUE	=62095+12-PE1	=62095+12/1.4	78
1	37673	PE-TUBE ID2MM-0D4MM PE-BLUE	=62095+12-PE2	=62095+12/1.5	79
1	62122	G-SCREW CONNECTION M3 - ID4 A2	=62095+12-X2	=62095+12/1.4	80
1	62122	G-SCREW CONNECTION M3 - ID4 A2	=62095+12-X1	=62095+12/1.5	81
1	62122	G-SCREW CONNECTION M3 - ID4 A2	=62095+12-X4	=62095+12/1.5	82
1	62131	5/2-DIRECTIONAL CONTROL VALVE NC 24VDC M3I INCL. CONNECTOR	=62095+12-Y1	=62095+12/1.5	83
1	62132	BAFFLE M3 MS-NI	=62095+12-Z1	=62095+12/1.4	84
1	62132	BAFFLE M3 MS-NI	=62095+12-Z2	=62095+12/1.5	85

=74493+11.9/1

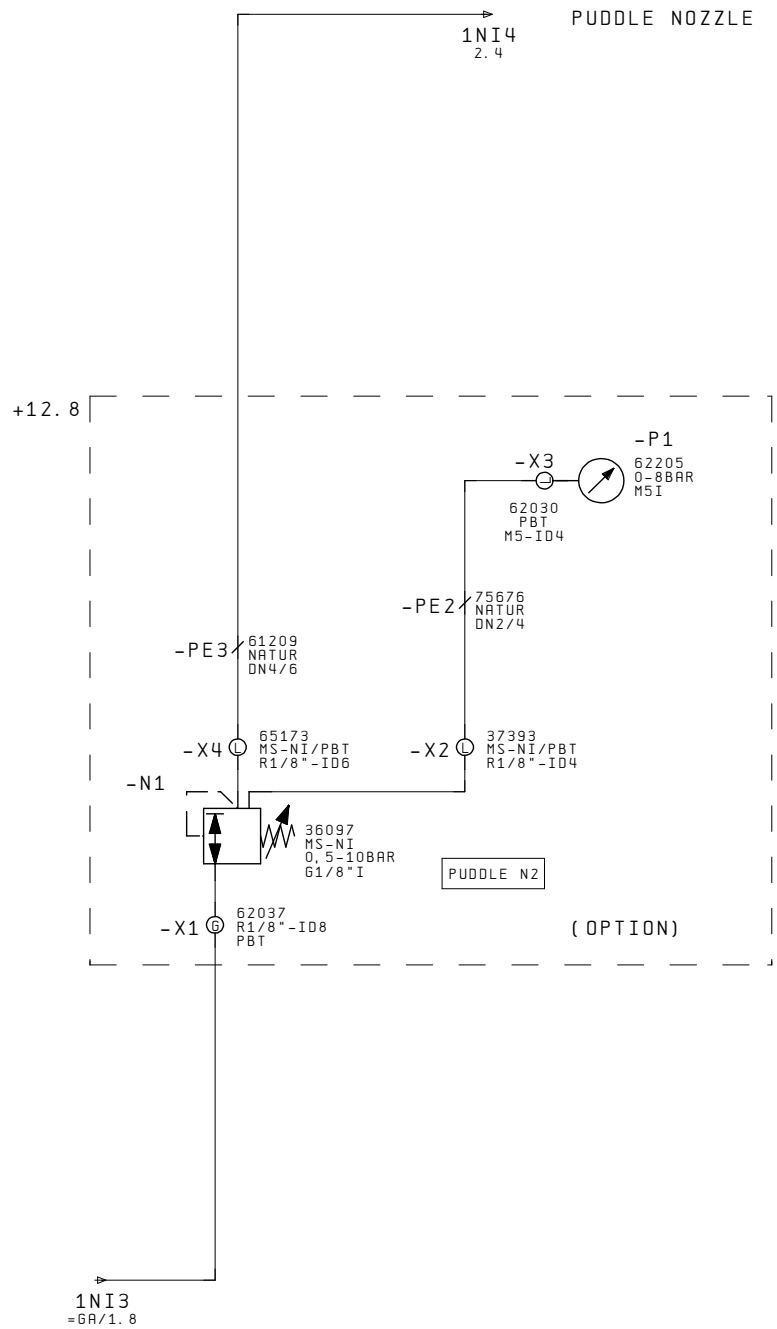
1		DATE	07. Apr. 2009	KA0911	SSE SISTER SEMICON. BILL OF MATERIALS	77004	=62095	
		NAME	RS	OPTIWET ST60	EQUIPMENT GMBH		+12	
		PLDT	07. Apr. 2009					
CHANGES	DATE	NAME	FORM.	EPLAN 4.10 : 14.09.93	ORIG.	EST. WITH	EST. BY	
							SH.	2
								2 SH



+11.9/1

2

DATE		KA0911		SSE SISTER SEMICON.		SPRAY NOZZLE		77004		=74493	
NAME		RS		EQUIPMENT GMBH		DI-WATER				+12	
PLOT		07. Apr. 2009		OPTIWET ST60						SH. 1	
CHANGES	DATE	NAME	FORM.	EPLAN 4.10 : 14.09.93	ORIG.	EST. WITH	EST. BY			2 SH.	

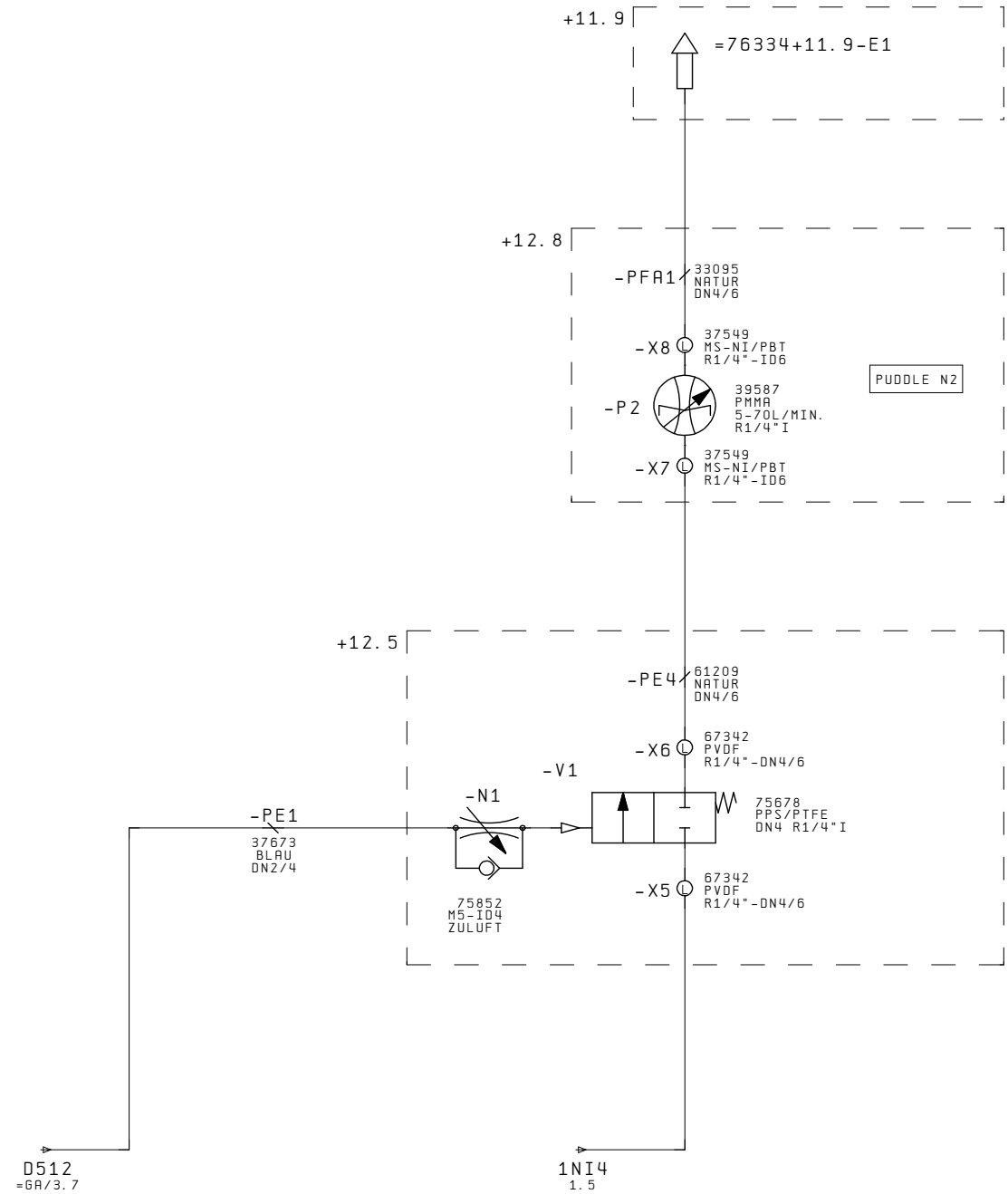


=74493+12.8/1

2

		DATE		KA0911		SSE SISTER SEMICON		PUDDLE NOZZLE		77004		=76334	
		NAME		RS		EQUIPMENT GMBH		NITROGEN				+12	
		PLOT		07. Apr. 2009		OPTIWET ST60		(OPTION)		OPTION		SH. 1	
CHANGES	DATE	NAME	FORM.	EPLAN 4.10 : 14.09.93	ORIG.	EST. WITH	EST. BY					3 SHS	

PUDDLE NOZZLE N2



PUDDLE N2

		DATE	KA0911		SSE SISTER SEMICON		PUDDLE NOZZLE		77004		=76334	
		NAME	RS	OPTIWET ST60		EQUIPMENT GMBH		NITROGEN				+12
		PLOT	07. Apr. 2009				(OPTION)		OPTION		SH. 2	
CHANGES	DATE	NAME	FORM.	EPLAN 4.10 : 14.09.93	ORIG.	EST. WITH	EST. BY			3 SHS		

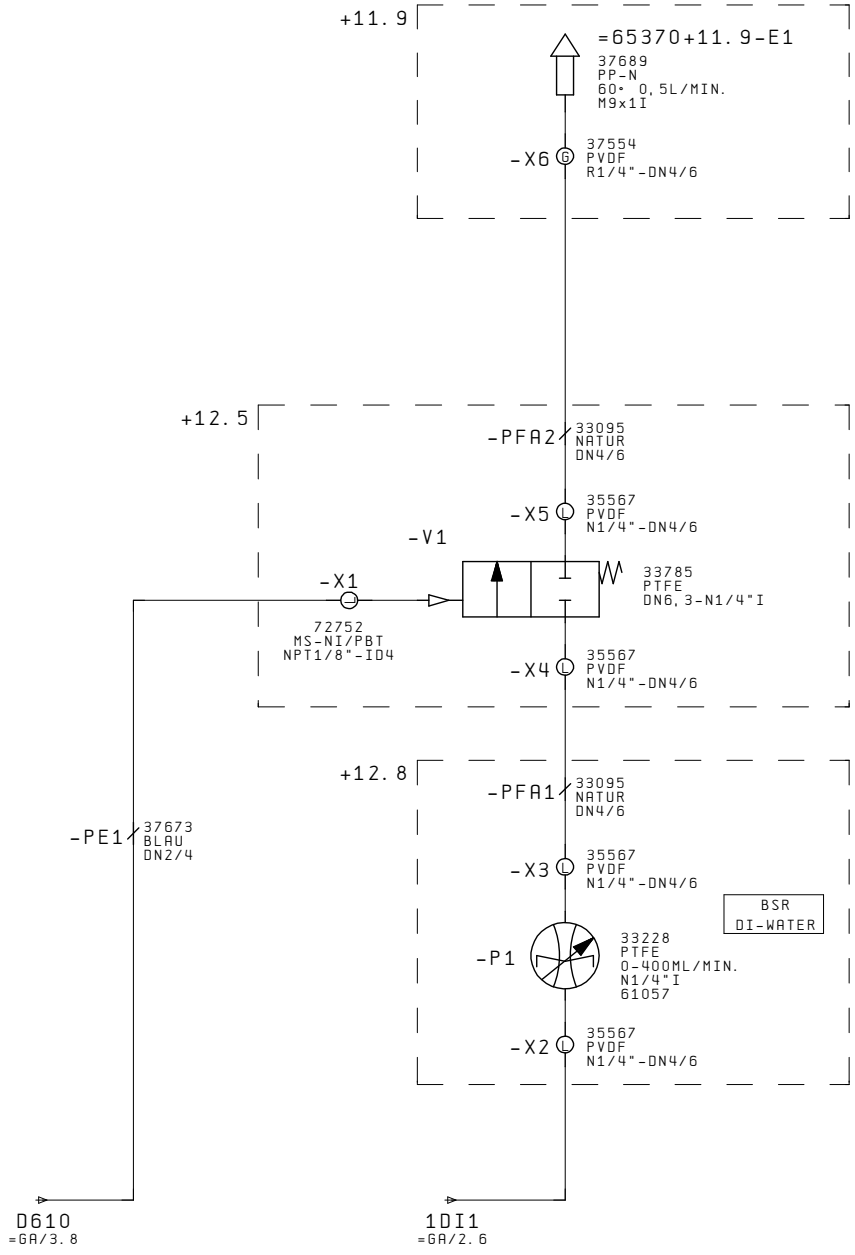
BILL OF MATERIALS

AMOUNT	ARTICLE NR-NO.	DESIGNATION	DEVICE DESIGNATION		POSITION
			PLANT / LOCATION / ID	SCHEMATICS / POSITION	
1	33095	PFA-TUBE ID4MM-0D6MM PFA-TRANSPARENT	=76334+12. 8-PFA1	=76334+12/2. 4	268
1	36097	PRESSURE REGULATOR 0,5-10BAR G1/8" I MS-NI	=76334+12. 8-N1	=76334+12/1. 4	269
1	37393	L-PLUG-SCREW CONNECTION R1/8"-ID4 MS-NI/PBT	=76334+12. 8-X2	=76334+12/1. 5	270
1	37549	L-PLUG-SCREW CONNECTION R1/4"-ID6 MS-NI/PBT	=76334+12. 8-X8	=76334+12/2. 4	271
1	37549	L-PLUG-SCREW CONNECTION R1/4"-ID6 MS-NI/PBT	=76334+12. 8-X7	=76334+12/2. 4	272
1	39587	FLOWMETER GAS 5-70L/MIN. R1/4" I PMMA	=76334+12. 8-P2	=76334+12/2. 4	273
1	61209	TUBE DN4/6 TRANSPARENT PE	=76334+12. 8-PE3	=76334+12/1. 4	274
1	62030	L-PLUG-SCREW CONNECTION M5-ID4 PBT	=76334+12. 8-X3	=76334+12/1. 5	275
1	62037	G-PLUG-SCREW CONNECTION R1/8"-ID8 PBT	=76334+12. 8-X1	=76334+12/1. 4	276
1	62205	PRESSURE GAUGE 0-8BAR M5I	=76334+12. 8-P1	=76334+12/1. 5	277
1	64071	ADAPTER PLATE FLOWMETER SS	=76334+12. 8-P2	=76334+12/2. 4	278
1	65173	L-PLUG-SCREW CONNECTION R1/8"-ID6 MS-NI/PBT	=76334+12. 8-X4	=76334+12/1. 4	279
1	75676	TUBE DN2/4 TRANSPARENT PE	=76334+12. 8-PE2	=76334+12/1. 5	280

+12. 5/1 =65370+11. 9/1

DATE	07. Apr. 2009	KA0911	SSE SISTER SEMICON. EQUIPMENT GMBH	BILL OF MATERIALS	77004	=76334 +12. 8	SH. 1
NAME	RS	OPTIWET ST60					1 SH
PLDT	07. Apr. 2009						
CHANGES	DATE	NAME	FORM.	EPLAN 4.10 : 14.09.93	ORIG.	EST. WITH	EST. BY

BACK SIDE RINSE
DI-WATER



D610
=6A/3.8

1D11
=6A/2.6

+11.9/1

2

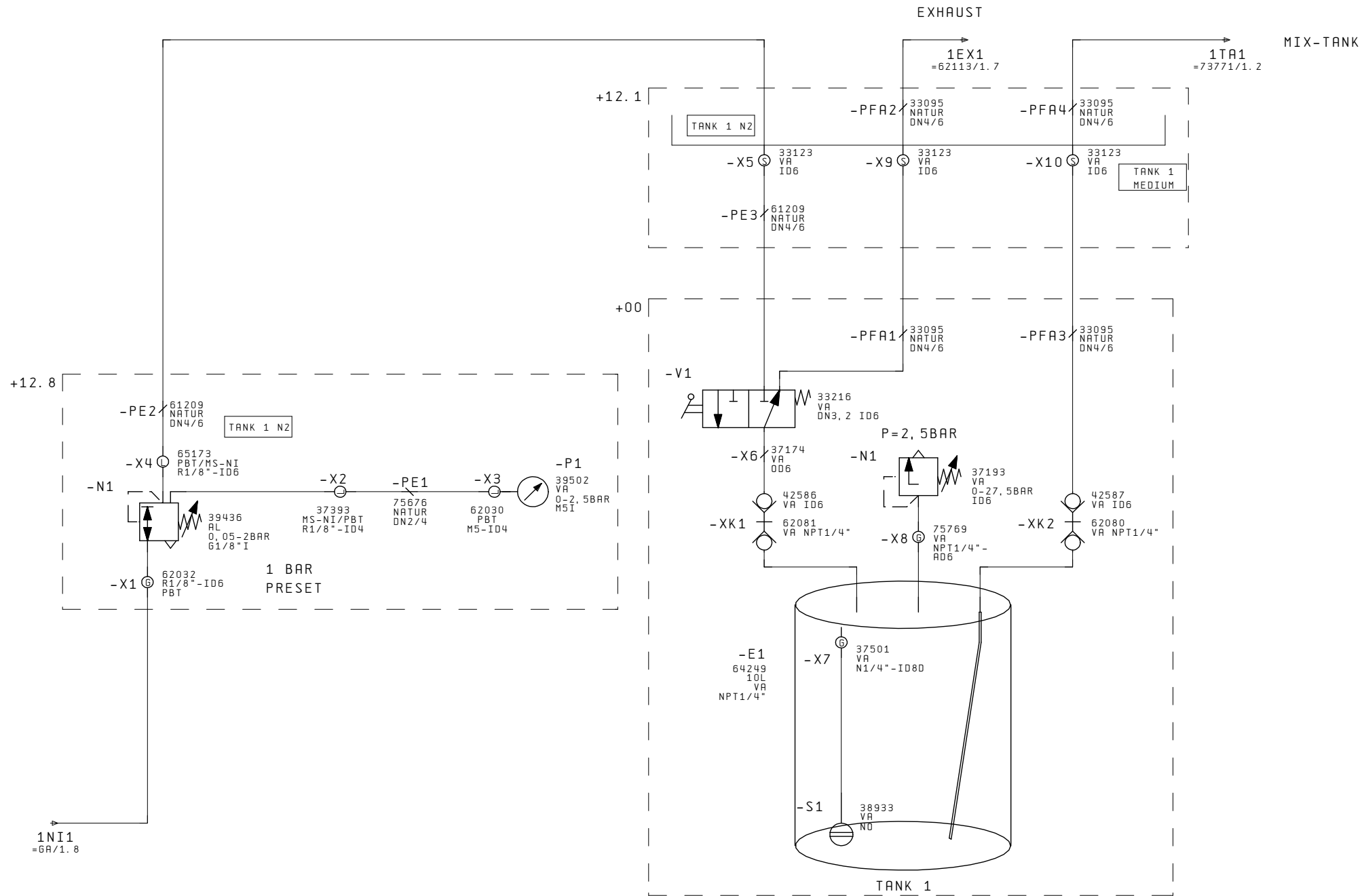
DATE		KA0911		SSE SISTER SEMICON.		BACK SIDE RINSE		77004		=65370	
NAME		RS		EQUIPMENT GMBH		DI-WATER				+12	
PLOT		07. Apr. 2009		OPTIWET ST60						SH. 1	
CHANGES	DATE	NAME	FORM.	EPLAN 4.10 : 14.09.93	ORIG.	EST. WITH	EST. BY			2 SH	

BILL OF MATERIALS

AMOUNT	ARTICLE NR-NO.	DESIGNATION	DEVICE DESIGNATION		POSITION
			PLANT / LOCATION / ID	SCHEMATICS / POSITION	
1	33095	PFA-TUBE ID4MM-OD6MM PFA-TRANSPARENT	=62231+00-PFA1	=62231+12/1.6	99
1	33095	PFA-TUBE ID4MM-OD6MM PFA-TRANSPARENT	=62231+00-PFA3	=62231+12/1.7	100
1	33216	3-WAY HAND VALVE DN3,2 ID6 SS	=62231+00-V1	=62231+12/1.4	101
1	37174	PIPE BRACKET OD6 SS	=62231+00-X6	=62231+12/1.5	102
1	37175	REINFORCEMENT SLEEVE OD4MM SS	=62231+00-V1	=62231+12/1.4	103
1	37175	REINFORCEMENT SLEEVE OD4MM SS	=62231+00-XK1	=62231+12/1.5	104
1	37175	REINFORCEMENT SLEEVE OD4MM SS	=62231+00-XK2	=62231+12/1.7	105
1	37193	EXCESS PRESSURE VALVE 0-27,5BAR ID6 SS	=62231+00-N1	=62231+12/1.6	106
1	37501	G-SCREW CONNECTION NPT1/4"-ID8 RUN SS	=62231+00-X7	=62231+12/1.5	107
1	42585	COLLET ID8MM PTFE	=62231+00-X7	=62231+12/1.5	108
1	42586	FEMALE COUPLING CONNECTOR ID6, O-RING KALREZ SS	=62231+00-XK1	=62231+12/1.5	109
1	42587	MALE COUPLING CONNECTOR ID6, O-RING KALREZ SS	=62231+00-XK2	=62231+12/1.7	110
1	62080	FEMALE COUPLING CONNECTOR NPT1/4" O-RING KALREZ SS/KALREZ	=62231+00-XK2	=62231+12/1.7	111
1	62081	MALE COUPLING CONNECTOR NPT1/4" O-RING KALREZ SS/KALREZ	=62231+00-XK1	=62231+12/1.5	112
1	64249	PRESSURE TANK 10L VOLUME SS	=62231+00-E1	=62231+12/1.5	113
1	75769	G-ADAPTER NPT1/4"-AD6MM SS	=62231+00-X8	=62231+12/1.6	114

=65370+12.8/1 +12/1

DATE	07. Apr. 2009	KA0911	SSE SISTER SEMICON. EQUIPMENT GMBH	BILL OF MATERIALS	77004	=62231 +00	SH. 1
NAME	RS	OPTIWET ST60					1 SH
PLOT	07. Apr. 2009						
CHANGES	DATE	NAME	FORM.	EPLAN 4.10 : 14.09.93	ORIG.	EST. WITH	EST. BY



+00/1

2

DATE		KA0911		SSE SISTER SEMICON.		PRESSURE TANK SYSTEM 1		77004		=62231	
NAME		RS		EQUIPMENT GMBH		10L SS TANK				+12	
PLOT		07. Apr. 2009		OPTIWET ST60		(OPTION)		OPTION		SH. 1	
CHANGES	DATE	NAME	FORM.	EPLAN 4.10 : 14.09.93	ORIG.	EST. WITH	EST. BY			2 SH	

BILL OF MATERIALS

AMOUNT	ARTICLE NR-NO.	DESIGNATION	DEVICE DESIGNATION		POSITION
			PLANT / LOCATION / ID	SCHEMATICS / POSITION	
1	33114	L-SCREW CONNECTION NPT1/4"-ID6 SS	=73771+00-X15	=73771+12/2.7	150
1	37174	PIPE BRACKET OD6 SS	=73771+00-X16	=73771+12/2.7	151
1	37193	EXCESS PRESSURE VALVE 0-27,5BAR ID6 SS	=73771+00-N1	=73771+12/2.7	152
1	37501	G-SCREW CONNECTION NPT1/4"-ID8 RUN SS	=73771+00-X18	=73771+12/2.6	153
1	39537	PFA-TUBE ID6MM-OD8MM PFA-TRANSPARENT	=73771+00-PFA10	=73771+12/2.8	154
1	42586	FEMALE COUPLING CONNECTOR ID6, O-RING KALREZ SS	=73771+00-XK3	=73771+12/2.4	155
1	42587	MALE COUPLING CONNECTOR ID6, O-RING KALREZ SS	=73771+00-XK4	=73771+12/2.8	156
1	44226	G-DOUBLE NIPPLE NPT1/4" PVDF	=73771+00-X13	=73771+12/2.6	157
1	44923	G-REDUCTION OD6-ID8 SS	=73771+00-X32	=73771+12/2.8	158
1	62080	FEMALE COUPLING CONNECTOR NPT1/4" O-RING KALREZ SS/KALREZ	=73771+00-XK4	=73771+12/2.8	159
1	62081	MALE COUPLING CONNECTOR NPT1/4" O-RING KALREZ SS/KALREZ	=73771+00-XK3	=73771+12/2.4	160
1	64123	NON-RETURN VALVE 0,02BAR NPT1/4" A2	=73771+00-V3	=73771+12/2.5	161
1	64249	PRESSURE TANK 10L VOLUME SS	=73771+00-E1	=73771+12/2.6	162
1	65142	G-SCREW CONNECTION NPT1/4"-DN4/6 PVDF	=73771+00-X24	=73771+12/2.5	163
1	65142	G-SCREW CONNECTION NPT1/4"-DN4/6 PVDF	=73771+00-X12	=73771+12/2.6	164
1	66341	FEMALE COUPLING CONNECTOR G1/4" I PVDF/VITON	=73771+00-XK2	=73771+12/2.5	165
1	66341	FEMALE COUPLING CONNECTOR G1/4" I PVDF/VITON	=73771+00-XK1	=73771+12/2.6	166
1	66342	MALE COUPLING CONNECTOR G1/4" I PVDF/VITON	=73771+00-XK2	=73771+12/2.5	167
1	66342	MALE COUPLING CONNECTOR G1/4" I PVDF/VITON	=73771+00-XK1	=73771+12/2.6	168
1	73627	T-SCREW CONNECTION 2X NPT1/4" I-NPT1/4" SS	=73771+00-X25	=73771+12/2.5	169

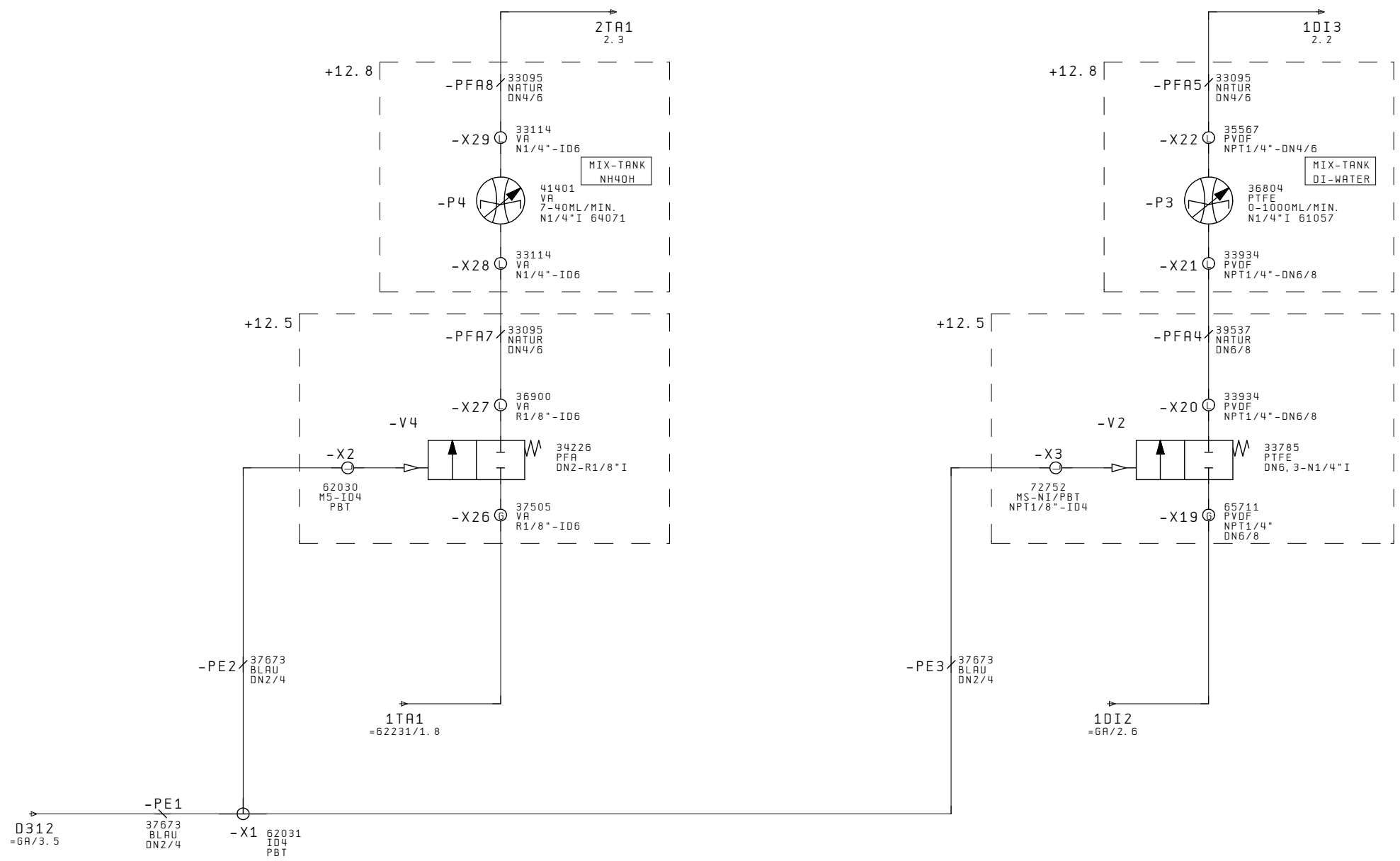
=62231+12.8/1

2

DATE		07. Apr. 2009		KA0911		SSE SISTER SEMICON. BILL OF MATERIALS		77004		=73771	
NAME		RS		OPTIWET ST60		EQUIPMENT GMBH				+00	
PLOT		07. Apr. 2009								SH. 1	
CHANGES	DATE	NAME	FORM.	EPLAN 4.10 : 14.09.93	ORIG.	EST. WITH	EST. BY			2 SH	

AMMONIA

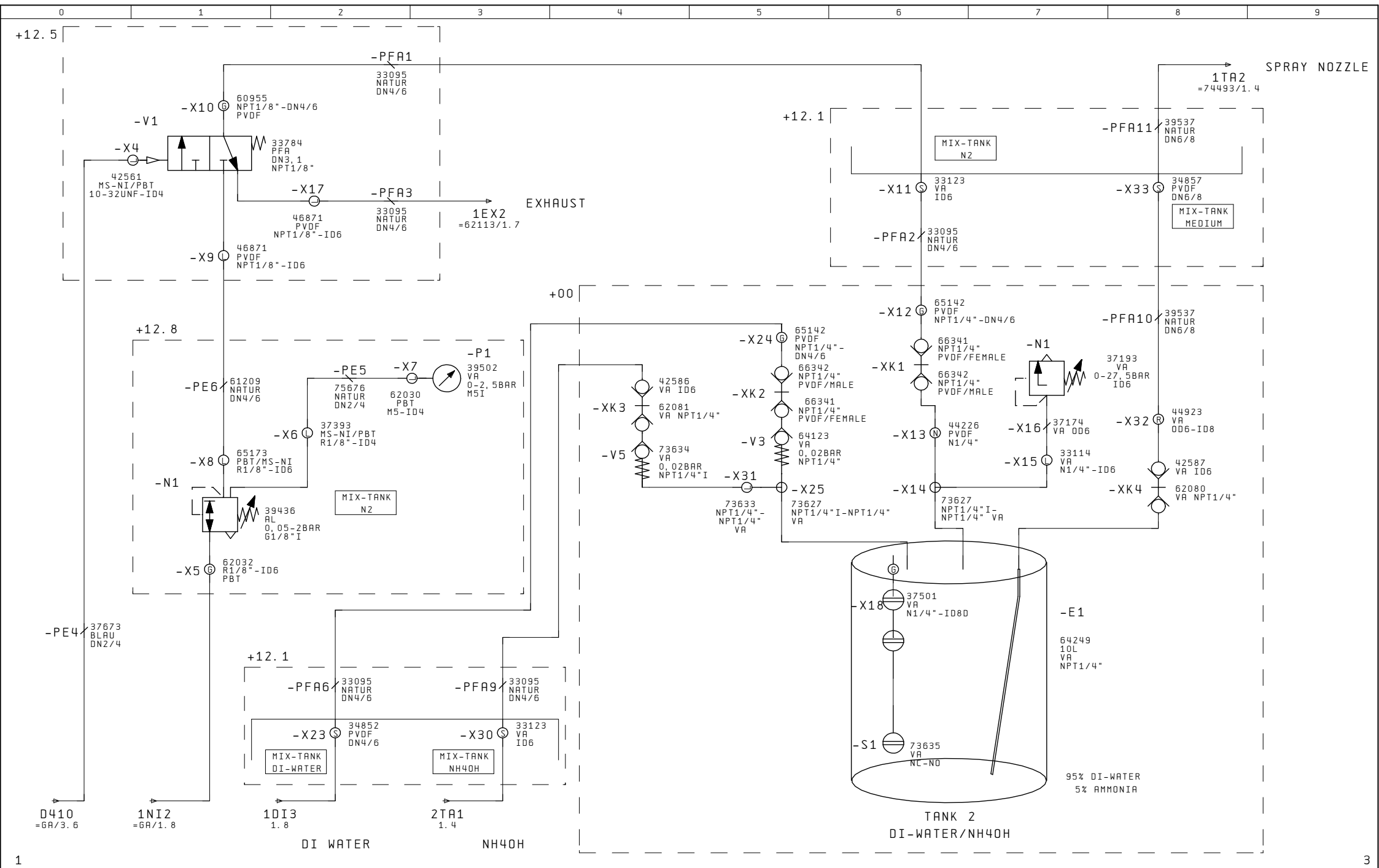
DI WATER



+00/2

2

DATE		KA0911		SSE SISTER SEMICON.		MIXING VESSEL		77004		=73771	
NAME		RS		EQUIPMENT GMBH		10L SS TANK				+12	
PLOT		07. Apr. 2009		OPTIWET ST60		AMMONIA/DI-WATER				SH. 1	
CHANGES	DATE	NAME	FORM.	EPLAN 4.10 : 14.09.93	ORIG.	EST. WITH	EST. BY			3 SH.	



DATE		KA0911		SSE SISTER SEMICON		MIXING VESSEL		77004		=73771	
NAME		RS		EQUIPMENT GMBH		10L SS TANK				+12	
PLOT		07. Apr. 2009		OPTIWET ST60		AMMONIA/DI-WATER				SH. 2	
CHANGES	DATE	NAME	FORM.	EPLAN 4.10 : 14.09.93	ORIG.	EST. WITH	EST. BY			3 SH	

BILL OF MATERIALS

AMOUNT	ARTICLE NR-NO.	DESIGNATION	DEVICE DESIGNATION		POSITION
			PLANT / LOCATION / ID	SCHEMATICS / POSITION	
1	33095	PFA-TUBE ID4MM-0D6MM PFA-TRANSPARENT	=73771+12.5-PFA7	=73771+12/1.3	187
1	33095	PFA-TUBE ID4MM-0D6MM PFA-TRANSPARENT	=73771+12.5-PFA1	=73771+12/2.2	188
1	33095	PFA-TUBE ID4MM-0D6MM PFA-TRANSPARENT	=73771+12.5-PFA3	=73771+12/2.2	189
1	33784	3/2-WAY DIAPHRAGM VALVE DN3, 1 NPT1/8"I PFA/PVDF	=73771+12.5-V1	=73771+12/2.1	190
1	33785	2/2-DIRECTIONAL CONTROL VALVE NC PNEUM. DN6, 3 PFA/PVDF/PTFE	=73771+12.5-V2	=73771+12/1.7	191
1	33934	L-SCREW CONNECTION NPT1/4"-DN6/8 PVDF	=73771+12.5-X20	=73771+12/1.7	192
1	34226	2/2-DIRECTIONAL CONTROL VALVE PNEUM. DN2, R1/8"I PFA	=73771+12.5-V4	=73771+12/1.2	193
1	36900	L-SCREW CONNECTION R1/8"-ID6 SS	=73771+12.5-X27	=73771+12/1.3	194
1	37505	G-SCREW CONNECTION R1/8"-ID6 SS	=73771+12.5-X26	=73771+12/1.3	195
1	39537	PFA-TUBE ID6MM-0D8MM PFA-TRANSPARENT	=73771+12.5-PFA4	=73771+12/1.7	196
1	42561	L-SCREW CONNECTION 10-32UNF-ID4 MS-NI/PBT	=73771+12.5-X4	=73771+12/2.0	197
1	46871	L-SCREW CONNECTION NPT1/8"-DN4/6 PVDF	=73771+12.5-X9	=73771+12/2.1	198
1	46871	L-SCREW CONNECTION NPT1/8"-DN4/6 PVDF	=73771+12.5-X17	=73771+12/2.2	199
1	60955	G-SCREW CONNECTION NPT1/8"-DN4/6 PVDF	=73771+12.5-X10	=73771+12/2.1	200
1	62030	L-PLUG-SCREW CONNECTION M5-ID4 PBT	=73771+12.5-X2	=73771+12/1.2	201
1	65711	G-SCREW CONNECTION NPT1/4"-DN6/8 PVDF	=73771+12.5-X19	=73771+12/1.7	202
1	72752	L-PLUG-SCREW CONNECTION NPT1/8"-ID4 MS-NI/PBT	=73771+12.5-X3	=73771+12/1.6	203

+12.1/1

+12.8/1

DATE	07. Apr. 2009	KA0911	SSE SISTER SEMICON. EQUIPMENT GMBH	BILL OF MATERIALS	77004	=73771 +12.5	SH. 1
NAME	RS	OPTIWET ST60					1 SH
PLOT	07. Apr. 2009						
CHANGES	DATE	NAME	FORM.	EPLAN 4.10 : 14.09.93	ORIG.	EST. WITH	EST. BY

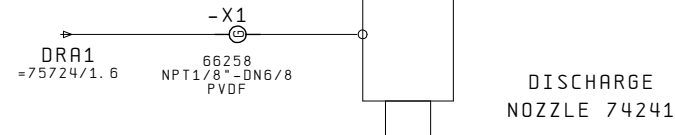
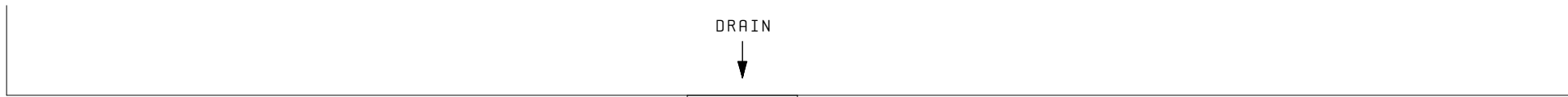
BILL OF MATERIALS

AMOUNT	ARTICLE NR-NO.	DESIGNATION		DEVICE DESIGNATION		POSITION
				PLANT / LOCATION / ID	SCHEMATICS / POSITION	
1	33095	PFA-TUBE ID4MM-0D6MM	PFA-TRANSPARENT	=73771+12. 8-PFA8	=73771+12/1. 3	204
1	33095	PFA-TUBE ID4MM-0D6MM	PFA-TRANSPARENT	=73771+12. 8-PFA5	=73771+12/1. 7	205
1	33114	L-SCREW CONNECTION NPT1/4"-ID6	SS	=73771+12. 8-X29	=73771+12/1. 3	206
1	33114	L-SCREW CONNECTION NPT1/4"-ID6	SS	=73771+12. 8-X28	=73771+12/1. 3	207
1	33934	L-SCREW CONNECTION NPT1/4"-DN6/8	PVDF	=73771+12. 8-X21	=73771+12/1. 7	208
1	35567	L-SCREW CONNECTION NPT1/4"-DN4/6	PVDF	=73771+12. 8-X22	=73771+12/1. 7	209
1	36804	FLOWMETER MEDIEN 0-1000ML/MIN. NPT1/4"I	PTFE	=73771+12. 8-P3	=73771+12/1. 7	210
1	37393	L-PLUG-SCREW CONNECTION R1/8"-ID4	MS-NI/PBT	=73771+12. 8-X6	=73771+12/2. 2	211
1	39436	PRESSURE REGULATOR 0,05-2BAR 61/8"I	AL	=73771+12. 8-N1	=73771+12/2. 1	212
1	39502	PRESSURE GAUGE 0-2,5BAR M5I	SS	=73771+12. 8-P1	=73771+12/2. 3	213
1	41401	FLOWMETER MEDIEN 7-40ML/MIN. NPT1/4"I	SS	=73771+12. 8-P4	=73771+12/1. 3	214
1	61057	ADAPTER PLATE PARKER FLOWMETER		=73771+12. 8-P3	=73771+12/1. 7	215
1	61209	TUBE DN4/6 TRANSPARENT	PE	=73771+12. 8-PE6	=73771+12/2. 1	216
1	62030	L-PLUG-SCREW CONNECTION M5-ID4	PBT	=73771+12. 8-X7	=73771+12/2. 2	217
1	62032	G-PLUG-SCREW CONNECTION R1/8"-ID6	PBT	=73771+12. 8-X5	=73771+12/2. 1	218
1	64071	ADAPTER PLATE FLOWMETER	SS	=73771+12. 8-P4	=73771+12/1. 3	219
1	65173	L-PLUG-SCREW CONNECTION R1/8"-ID6	MS-NI/PBT	=73771+12. 8-X8	=73771+12/2. 1	220
1	75676	TUBE DN2/4 TRANSPARENT	PE	=73771+12. 8-PE5	=73771+12/2. 2	221

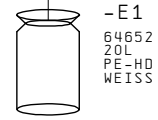
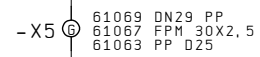
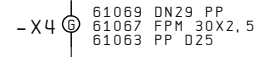
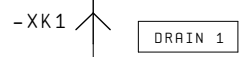
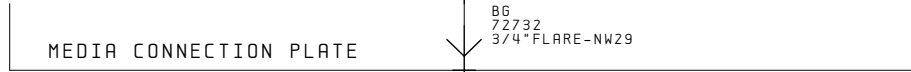
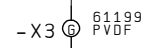
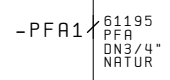
+12. 5/1

=74780+12/1

DATE		07. Apr. 2009		KA0911		SSE SISTER SEMICON. BILL OF MATERIALS		77004		=73771	
NAME		RS		OPTIWET ST60		EQUIPMENT GMBH				+12. 8	
PLOT		07. Apr. 2009								SH. 1	
CHANGES	DATE	NAME	FORM.	EPLAN 4.10 : 14.09.93	ORIG.	EST. WITH	EST. BY			1 SH	



DISCHARGE
NOZZLE 74241



WASTE-TANK

=73771+12.8/1

2

		DATE	KA0911		SSE SISTER SEMICON. DRAIN		77004		=74780	
		NAME	RS	OPTIWET ST60		EQUIPMENT GMBH				+12
		PLOT	07. Apr. 2009							
CHANGES	DATE	NAME	FORM.	EPLAN 4.10 : 14.09.93	ORIG.	EST. WITH	EST. BY			SH. 1
										2 SHS

BILL OF MATERIALS

AMOUNT	ARTICLE NR-NO.	DESIGNATION	DEVICE DESIGNATION		POSITION	
			PLANT / LOCATION / ID	SCHEMATICS / POSITION		
1	61063	UNION NUT PP D25	PP	=74780+12-X4	=74780+12/1.4	239
1	61063	UNION NUT PP D25	PP	=74780+12-X5	=74780+12/1.4	240
1	61067	O-RING 30 X 2,5 DIN3770	FPM	=74780+12-X4	=74780+12/1.4	241
1	61067	O-RING 30 X 2,5 DIN3770	FPM	=74780+12-X5	=74780+12/1.4	242
1	61069	RING DN29	PP	=74780+12-X4	=74780+12/1.4	243
1	61069	RING DN29	PP	=74780+12-X5	=74780+12/1.4	244
1	61195	TUBE 3/4" TRANSPARENT	PFA	=74780+12-PFA1	=74780+12/1.4	245
1	61196	WAVE TUBE NW29 TRANSPARENT	PP	=74780+12-PFA2	=74780+12/1.4	246
1	61199	UNION NUT FL12-1	PVDF	=74780+12-X2	=74780+12/1.4	247
1	61199	UNION NUT FL12-1	PVDF	=74780+12-X3	=74780+12/1.4	248
1	64652	WASTE TANK 20L WHITE	PE-HD	=74780+12-E1	=74780+12/1.4	249
1	66258	G-SCREW CONNECTION NPT1/8"-DN6/8	PVDF	=74780+12-X1	=74780+12/1.4	250
1	72732	DISCHARGE NOZZLE 3/4"FLARE-NW 29 --FM---		=74780+12-XK1	=74780+12/1.4	251
1	72737	CANISTER ADAPTER NW 29 --FM---		=74780+12-X6	=74780+12/1.4	252

1

DATE		07. Apr. 2009		KA0911		SSE SISTER SEMICON. BILL OF MATERIALS		77004		=74780	
NAME		RS		OPTIWET ST60		EQUIPMENT GMBH				+12	
PLOT		07. Apr. 2009								SH. 2	
CHANGES	DATE	NAME	FORM.	EPLAN 4.10 : 14.09.93	ORIG.	EST. WITH	EST. BY			2 SH	